



Planting Report



1,818 rainforest trees planted
for \$10,000 donated in January 2024

Prepared by:
Leonie Zauzig
Kallen Marecic (Editor)

ReForest Now

(+61)415 134 941
info@reforestnow.org.au

ReForest Now Ltd
Trading as: ReForest Now

ABN 40 887 914 802 | ACN 656 965 856

3/11 Booyun Street
Brunswick Heads NSW 2483



ReForest Now is registered as a charity with the Australian Charities and Not-for-profits Commission (ACNC). NSW License Number: CFN 24812.

Donations over \$2.00 are tax deductible.



We acknowledge the the Aboriginal People of the Bundjalung Nation as the Traditional Custodians of the land we work on and thank them for protecting ecosystems since time immemorial.

WHAT YOUR DONATION IS REBUILDING

The Lowland Subtropical Rainforest of Northern New South Wales (NSW), also known as the 'Big Scrub', was once the largest expanse of subtropical rainforest in Australia, spanning 75,000 hectares and boasting some of the country's most diverse flora and fauna.

Sadly, the original extent of forest has been significantly reduced since European colonisation, with only around 100 hectares of smaller, isolated pockets remaining. It is important to protect, regenerate and reconnect these remaining pockets of the Big Scrub. Our plantings in NSW aim to rebuild this precious area.

Thank you, **THE MAKO FOUNDATION**, for helping us on our way to achieve this mission. Your donation has made a contribution towards rebuilding the Big Scrub rainforest.

How does ReForest Now help to rebuild native forests?

- Weekly plantings, with over 768,500 trees currently planted in Australia
- Maintaining our planting sites for 2-3 years, until our trees are self-sufficient
- 87+ ha of rainforest regenerated
- A growing species list of 160 species, including endangered species
- Educational workshops, starting end of June 2024

Did you know? ReForest Now has gone international! We are now actively regenerating forests in Indonesia too!



PLANTING SUMMARY

Date	Location	Number of trees
May 15, 2024	767 Afterlee Rd, Kyogle NSW	1,818

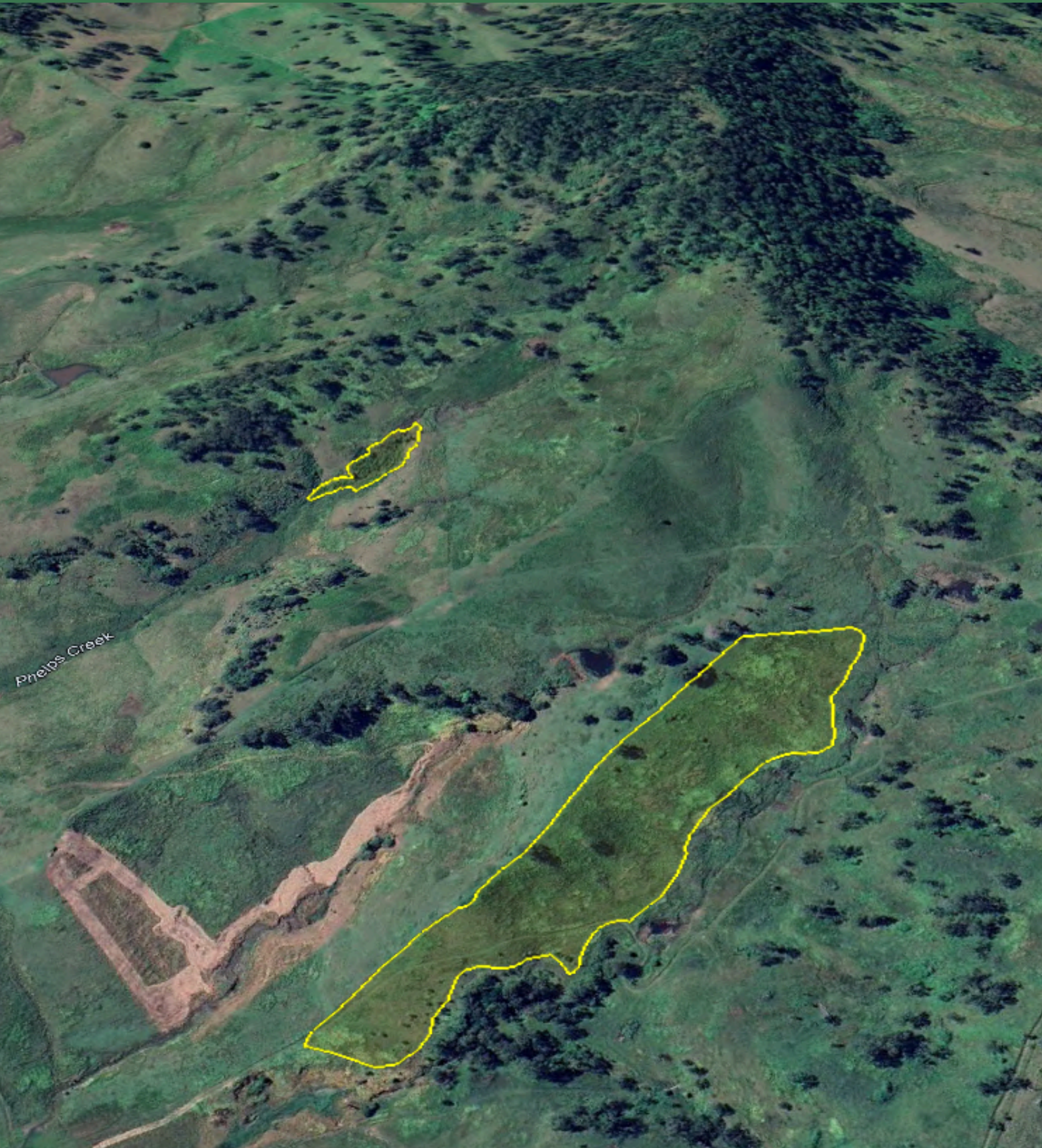
You can find additional reporting information and all contributing donors at reforestnow.org.au/findmytrees



This photo shows the terrain in Kyogle on May 15th. These steep slopes will soon be supported by the root systems of our newly planted trees.

MAPPING

767 Afterlee Rd, Kyogle NSW (May 15)



Did you know?

All 1,818 Mako trees are protected by a 100 year permanence period as part of a carbon project registered with the Australian Federal Government. While your trees enhance this project's environmental outcomes, they do not generate additional carbon credits for sale to other companies.

SPECIES LIST PAGE 1

We planted a diverse mix of 72 native rainforest species, along with some eucalypt species to support transitional ecotones. We carefully selected these species to enhance biodiversity and promote the rebuilding of a resilient ecosystem.

SCIENTIFIC NAME

Acacia disparima
Acacia floribunda
Acacia melanoxyln
Acmena smithii
Acronychia oblongifolia
Ailanthus triphysa
Alchornea ilicifolia
Allocasuarina torulosa
Alphitonia excelsa
Alphitonia petriei
Aphananthe philippinensis
Araucaria cunninghamii
Archidendron hendersonii
Auranticarpa rhombifolia
Backhousia myrtifolia
Baloghia inophylla
Brachychiton acerifolius
Brachychiton discolor
Callicarpa pedunculata
Castanospermum australe
Commersonia bartramia
Diospiros ebomera
Diploglottis australis
Diploglottis campbellii
Duboisia myoporoides
Dysoxylum fraserianum
Ehretia acuminata var. acuminata
Elaeocarpus grandis

COMMON NAME

Ironbark wattle
White Sally Wattle
Blackwood
Common Lilly Pilly
Common Acronychia
White Bean
Native Holly
Forest Oak
Red Ash
Pink Ash
Rough-leaved Elm
Hoop Pine
White Laceflower
Hollywood
Grey Myrtle
Brush Bloodwood
Flame Tree
Lacebark Tree
Velvet Leaf
Black Bean
Brown Kurrajong
Ebonywood / Black Ebony
Native Tamarind
Small-Leaved Tamarind
Corkwood
Rosewood
Koda
Blue Quandong



SCIENTIFIC NAME	COMMON NAME
<i>Elaeocarpus obovatus</i>	Hard Quandong
<i>Erythrina vespertilio</i>	Bat Wing Coral Tree
<i>Euroschinus falcatus</i>	Ribbonwood
<i>Ficus coronata</i>	Creek Sandpaper Fig
<i>Ficus fraseri</i>	Sandpaper Fig
<i>Ficus macrophylla</i>	Moreton Bay Fig
<i>Ficus oblique</i>	Small-leaved Fig
<i>Ficus superba</i>	Deciduous Fig
<i>Ficus virens</i>	Rock Fig
<i>Ficus watkinsiana</i>	Strangler Fig
<i>Flindersia australis</i>	Teak
<i>Flindersia schottiana</i>	Cudgerie
<i>Flindersia xanthoxyla</i>	Yellowwood
<i>Glochidion ferdinandi</i>	Cheese Tree
<i>Glochidion sumatranum</i>	Umbrella Cheese Tree
<i>Gmelina leichhardtii</i>	White Beech
<i>Grevillea robusta</i>	Silky Oak
<i>Guioa semiglauca</i>	Guioa
<i>Harpullia pendula</i>	Tulipwood
<i>Homalanthus populifolius</i>	Bleeding Hearts
<i>Hymenosporum flavum</i>	Native Frangipani
<i>Jagera pseudorhus</i> var. <i>pseudorhus</i>	Foambark Tree
<i>Lophostemon confertus</i>	Brush Box
<i>Lophostemon suaveolens</i>	Swamp Box
<i>Macaranga tanatius</i>	Macaranga
<i>Mallotus philippensis</i>	Red Kamala
<i>Melia azedarach</i> var. <i>australasica</i>	White Cedar
<i>Owenia cippiodora</i>	Onion Cedar

SCIENTIFIC NAME

Pararchidendron pruinatum

Pittosporum undulatum

Planchonella australis

Podocarpus elatus

Polyscias elegans

Polyscias murray

Rhodosphaera rhodanthema

Stenocarpus sinuatus

Sterculia quadrifida

Syzygium floribundum

Syzygium francisii

Syzygium hemilamprum

Syzygium luehmannii

Toona ciliata

Tristaniopsis laurina

COMMON NAME

Snow Wood

Sweet Pittosporum

Black Apple

Plum Pine

Celerywood

Pencil Cedar

Deep Yellowwood

Firewheel Tree

Red-Fruited Kurrajong

Weeping Lilly Pilly

Giant Water Gum

Broad-leaved Lilly Pilly

Riberry

Red Cedar

Water Gum



GALLERY



THANK YOU, MAKO FOUNDATION

Your funding is greatly appreciated and will lead to significant environmental benefits.

Your trees will be maintained for 2-3 years until they are self-sufficient in combating weed competition. The outcomes over the next 5-10 years should be extraordinary, as trees grow exceptionally quickly in this region of fertile soils and high rainfall.

We highly value long-term partnerships grounded in a shared vision and passion. We are thrilled to have connected with you.

Together we can see beautiful, large patches of rainforest returned to the Northern Rivers.

Thank you.

If you have any further queries please contact me on

+61 415 134 941

or

info@reforestnow.org.au

Yours sincerely,



Maximo Bottaro - Co-Founder & CEO of ReForest Now





Together, we can bring back the rainforest.

