



Planting Report

THRILLS

3,106 rainforest trees planted
for \$17,085 donated in January 2024

*Prepared by:
Leonie Zauzig*

ReForest Now Ltd
Trading as: ReForest Now

ABN 40 887 914 802 | ACN 656 965 856

3/11 Booyun Street
Brunswick Heads NSW 2483



ReForest Now is registered as a charity with the Australian Charities and Not-for-profits Commission (ACNC). NSW License Number: CFN 24812.

Donations over \$2.00 are tax deductible.



We acknowledge the the Aboriginal People of the Bundjalung Nation as the Traditional Custodians of the land we work on and thank them for protecting ecosystems since time immemorial.

OUR LOCAL LOWLAND SUBTROPICAL RAINFOREST

The Lowland Subtropical Rainforest of Northern New South Wales, commonly known as the 'Big Scrub,' was once the largest subtropical rainforest in Australia, spanning approximately 75,000 hectares and boasting one of the most diverse ranges of flora and fauna in the country.

Unfortunately, today, the Big Scrub has been cleared to nearly nothing, with around 100 hectares of small, isolated fragments remaining. It is crucial to care for, expand, and reconnect these remaining pockets of the Big Scrub.

We extend our heartfelt thanks to Thrills for their support of our work. We are lucky to be backed by you. Your contributions as a local brand play a vital role in bringing attention to and regenerating our endangered subtropical rainforest - a key landmark of the Northern Rivers region.

How does ReForest Now restore local rainforest?

- *Weekly plantings, now totalling 850,000+ trees locally*
- *We maintain planting sites for 2-3 years*
- *Our regen team removes invasive weeds from degraded rainforest*
- *We utilise over 200 native species, including those that are threatened*
- *We run educational workshops at our nursery in Mullumbimby*

Did you know? ReForest Now has gone international! We are now actively planting rainforest in Sumatra, Indonesia!



PLANTING SUMMARY

Date	Location	Number of trees
April 23, 2024	598 Myocum Road, Myocum NSW	2,593
May 13, 2024	767 Afterlee Road, Eden Creek NSW	513

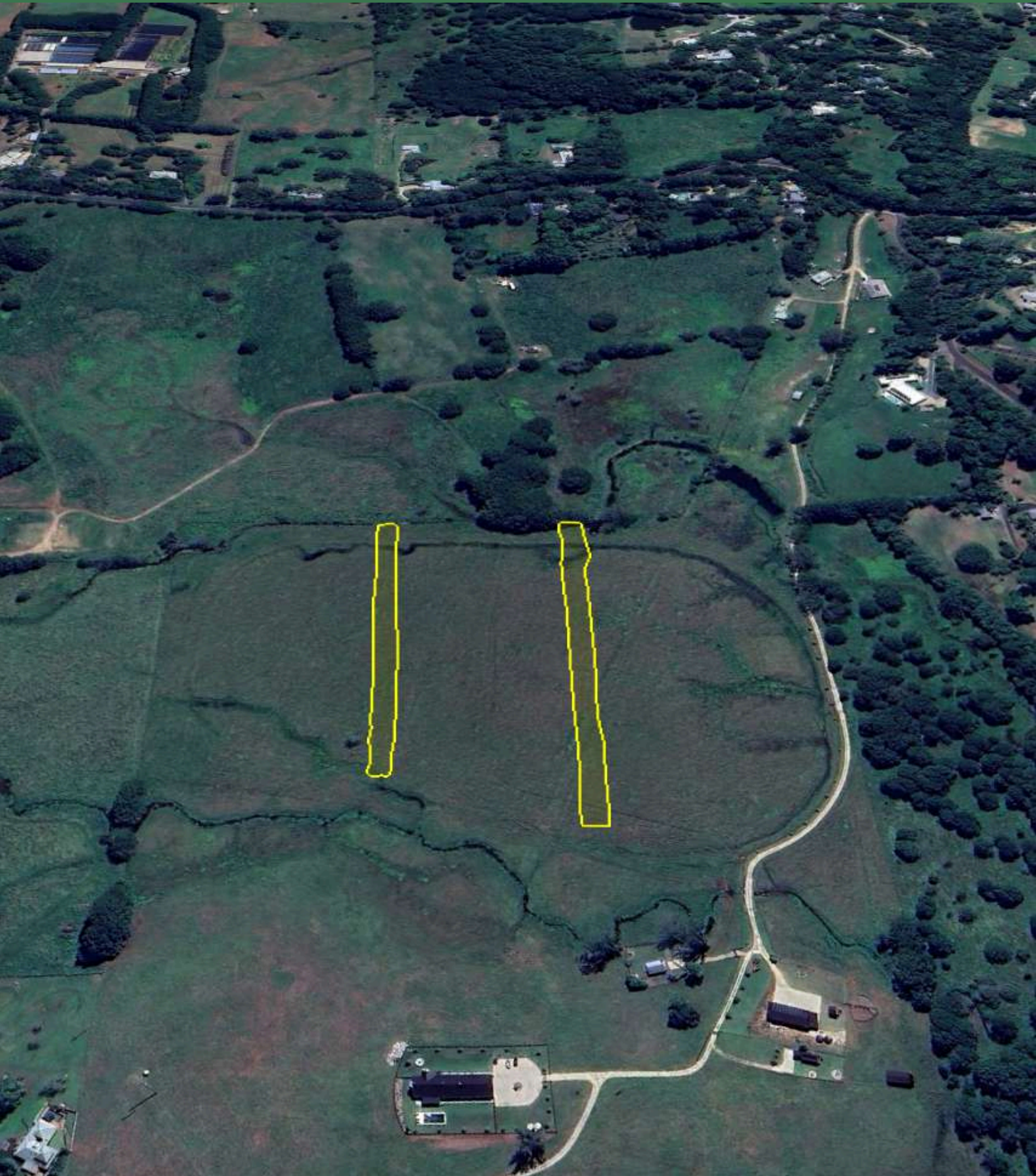
Find additional reporting information and all contributing donors at reforestnow.org.au/findmytrees



Our team spreads out across the planting site to ensure complete coverage and even species distribution, with the goal of developing a diverse, stratified canopy as the trees mature.

MAPPING

568 Myocum Rd, Myocum (April 23)



Planting two large strips, as shown on the map, allows for rotational grazing and land recovery. These strips also create somewhat of a wildlife path from the existing scrub to the northern creek, with plans to extend it to the southern boundary for better connectivity to nearby forests.

MAPPING

767 Afterlee Rd, Eden Creek (May 13)



Located just outside of Kyogle, this site is home to our third largest project, thanks to substantial contributions from our partners, the landholder and government grants.

Your trees are protected by a 100-year permanence period under a carbon project registered with the Australian Government. Although your trees contribute to the project's environmental outcomes, they do not generate additional carbon credits for sale to other companies.

The aerial image shows the extent of clearing in this area. It has been stripped bare. It's time to reforest!



Few words here



SPECIES LIST PAGE 1 (29)

We are always working hard to increase diversity in our projects! Across your two days of planting, a total of 91 species were used:

<i>Acacia disparima</i>	Ironbark Wattle
<i>Acacia floribunda</i>	White Sally Wattle
<i>Acacia melanoxylon</i>	Blackwood
<i>Acmena smithii</i>	Common Lilly Pilly
<i>Acronychia oblongifolia</i>	Common Acronychia
<i>Ailanthus triphysa</i>	White Bean
<i>Alchornea ilicifolia</i>	Native Holly
<i>Allocasuarina littoralis</i>	Black Oak
<i>Allocasuarina torulosa</i>	Forest Oak
<i>Alocasia brisbanensis</i>	Cunjevoi Lily
<i>Alphitonia excelsa</i>	Red Ash
<i>Alphitonia petriei</i>	Pink Ash
<i>Aphananthe philippinensis</i>	Rough-leaved Elm
<i>Araucaria cunninghamii</i>	Hoop Pine
<i>Archidendron hendersonii</i>	White Laceflower
<i>Archontophoenix cunninghamiana</i>	Bangalow Palm
<i>Auranticarpa rhombifolia</i>	Hollywood
<i>Backhousia myrtifolia</i>	Grey Myrtle
<i>Baloghia inophylla</i>	Brush Bloodwood
<i>Brachychiton acerifolius</i>	Flame Tree
<i>Brachychiton discolor</i>	Lacebark Tree
<i>Callicarpa pedunculata</i>	Velvet Leaf
<i>Callicoma serratifolia</i>	Black Wattle
<i>Castanospermum australe</i>	Black Bean
<i>Castanospora alphandii</i>	Brown Tamarind
<i>Casuarina cunninghamiana</i>	River Oak
<i>Commersonia bartramia</i>	Brown Kurrajong
<i>Crinum pedunculatum</i>	Beach Lily
<i>Cryptocarya obovata</i>	Pepperberry

SPECIES LIST PAGE 2 (29)

<i>Cupaniopsis anacardioides</i>	Tuckeroo
<i>Diospiros ebomera</i>	Ebonywood
<i>Diploglottis australis</i>	Native Tamarind
<i>Diploglottis campbellii</i>	Small-leaved Tamarind
<i>Duboisia myoporoides</i>	Corkwood
<i>Dysoxylum fraserianum</i>	Rosewood
<i>Ehretia acuminata</i> var. <i>acuminata</i>	Koda
<i>Elaeocarpus grandis</i>	Blue Quandong
<i>Elaeocarpus obovatus</i>	Hard Quandong
<i>Elaeocarpus reticulatus</i>	Blueberry Ash
<i>Elaeodendron australe</i> var. <i>australe</i>	Red Olive Plum
<i>Erythrina vespertilio</i>	Bat Wing Coral Tree
<i>Euroschinus falcatus</i>	Ribbonwood
<i>Ficus coronata</i>	Creek Sandpaper Fig
<i>Ficus fraseri</i>	Sandpaper Fig
<i>Ficus macrophylla</i>	Moreton Bay Fig
<i>Ficus obliqua</i>	Small-leaved Fig
<i>Ficus superba</i>	Deciduous Fig
<i>Ficus virens</i>	Rock Fig
<i>Ficus watkinsiana</i>	Strangler Fig
<i>Flindersia australis</i>	Teak
<i>Flindersia schottiana</i>	Cudgerie
<i>Flindersia xanthoxyla</i>	Yellowwood
<i>Glochidion ferdinandi</i>	Cheese Tree
<i>Glochidion sumatranum</i>	Umbrella Cheese Tree
<i>Gmelina leichhardtii</i>	White Beech
<i>Grevillea robusta</i>	Silky Oak
<i>Guioa semiglauca</i>	Guioa
<i>Harpullia pendula</i>	Tulipwood

SPECIES LIST PAGE 3 (29)

<i>Hibiscus tiliaceus</i>	Cottonwood Hibiscus
<i>Homalanthus populifolius</i>	Bleeding Hearts
<i>Hymenosporum flavum</i>	Native Frangipani
<i>Jagera pseudorhus</i> var. <i>pseudorhus</i>	Foambark Tree
<i>Livistona australis</i>	Cabbage Tree Palm
<i>Lophostemon confertus</i>	Brush Box
<i>Lophostemon suaveolens</i>	Swamp Box
<i>Macaranga tanatius</i>	Macaranga
<i>Mallotus discolor</i>	Yellow Kamala
<i>Mallotus philippensis</i>	Red Kamala
<i>Melaleuca ericifolia</i>	Swamp Paperbark
<i>Melaleuca quinquenervia</i>	Broad-leaved Paperbark
<i>Melastoma malabathricum</i>	Blue Tongue
<i>Melia azedarach</i> var. <i>australasica</i>	White Cedar
<i>Melicope elleryana</i>	Pink Euodia
<i>Owenia cippiodora</i>	Onion Cedar
<i>Pararchidendron pruinatum</i>	Snow Wood
<i>Pittosporum undulatum</i>	Sweet Pittosporum
<i>Planchonella australis</i>	Black Apple
<i>Podocarpus elatus</i>	Plum Pine
<i>Polyscias elegans</i>	Celerywood
<i>Polyscias murray</i>	Pencil Cedar
<i>Rhodosphaera rhodanthema</i>	Deep Yellowwood
<i>Stenocarpus sinuatus</i>	Firewheel Tree
<i>Sterculia quadrifida</i>	Red-Fruited Kurrajong
<i>Syzygium australe</i>	Brush Cherry
<i>Syzygium floribundum</i>	Weeping Lilly Pilly
<i>Syzygium francisii</i>	Giant Water Gum
<i>Syzygium hemilamprum</i>	Broad-leaved Lilly Pilly

SPECIES LIST PAGE 4 (4)

Syzygium luehmannii

Syzygium moorei

Toona ciliata

Tristaniopsis laurina

Riberry

Durobby

Red Cedar

Water Gum



GALLERY



THANK YOU, THRILLS

Your funding is appreciated and has a high impact on our ability to protect our native rainforest. Through your support, we can continuously improve on the impact that we are making.

Your trees will be maintained for 2-3 years until they are self-sufficient at fighting weed competition. The outcomes in 5-10 years should be extraordinary. Trees grow crazily quick in this region of fertile soils/high rainfall.

We value long-term partnerships with shared vision and passion, especially with friends right here in Byron. We are thrilled to have planted on your behalf once again.

Together we can see beautiful, large patches of rainforest returned to the Northern Rivers.

If you have any further queries please contact me on

+61 415 134 941

or

info@reforestnow.org.au

Yours sincerely,



Maximo Bottaro - Co-Founder & CEO of ReForest Now





Together, we can bring back the rainforest.



THRILLS