

---

# SUMMARY REPORT

\$50,000 donated 15th November 2023



*Prepared by:  
Maximo Bottaro*

[info@reforestnow.org.au](mailto:info@reforestnow.org.au) (+61)415 134 941

---



ReForest Now Ltd  
Trading as: ReForest Now

ABN 40 887 914 802 | ACN 656 965 856

3/11 Booyun Street  
Brunswick Heads NSW 2483



ReForest Now is registered as a charity with the Australian Charities and Not-for-profits Commission (ACNC). NSW License Number: CFN 24812.

Donations over \$2.00 are tax deductible.



We acknowledge the the Aboriginal People of the Bundjalung Nation as the Traditional Custodians of the land we work on and thank them for protecting ecosystems since time immemorial.

# INTRODUCTION

---

Hello!

There are a handful of donors who ask us what our needs are as charity.

It is a blessing, more than you may know.. RN delivers large scale planting for 115 companies and businesses around the world, yet we find it tough to maintain our capacity to deliver all of this as a not for profit. In terms of tree plantings delivered;

Australia has seen 774, 942 rainforest trees planted since January 2019.

Indonesia a further 88, 482 since just December 2023.

There are almost 60 employees working weekly at RN in Australia and a few more in Indonesia overseeing around 30 local farmers in reforestation.

We have kept the planting price at a low figure for donors in Australia, but this comes at operational strain as the cost of living increases. We have been so lucky to have SC Johnson step in and understand this.

RN exists and acts to give corporations and businesses an effective means to contribute to nature at a price and with an outcome they can justify. We work so that your contributions to us are heard by those who do business with you. Essentially, if charities are going to ask businesses to donate funds, then we believe in being a service to those businesses.

For allowing us to align funding to our genuine needs and for supporting an Australian born initiative, thank you.

Next, we will show you just how much reforestation and regeneration coverage we have reached, just in our local area.

For mapping of all of RN's work, we now have an embedded mapping link to see all our works in NSW, QLD and Indonesia.

Please click the link and navigate to our day by day planting spreadsheets above, which also have photos, mapping, species lists and more - or simply click on RESTOR to see where trees are planted.

<https://www.reforestnow.org.au/findmytrees>



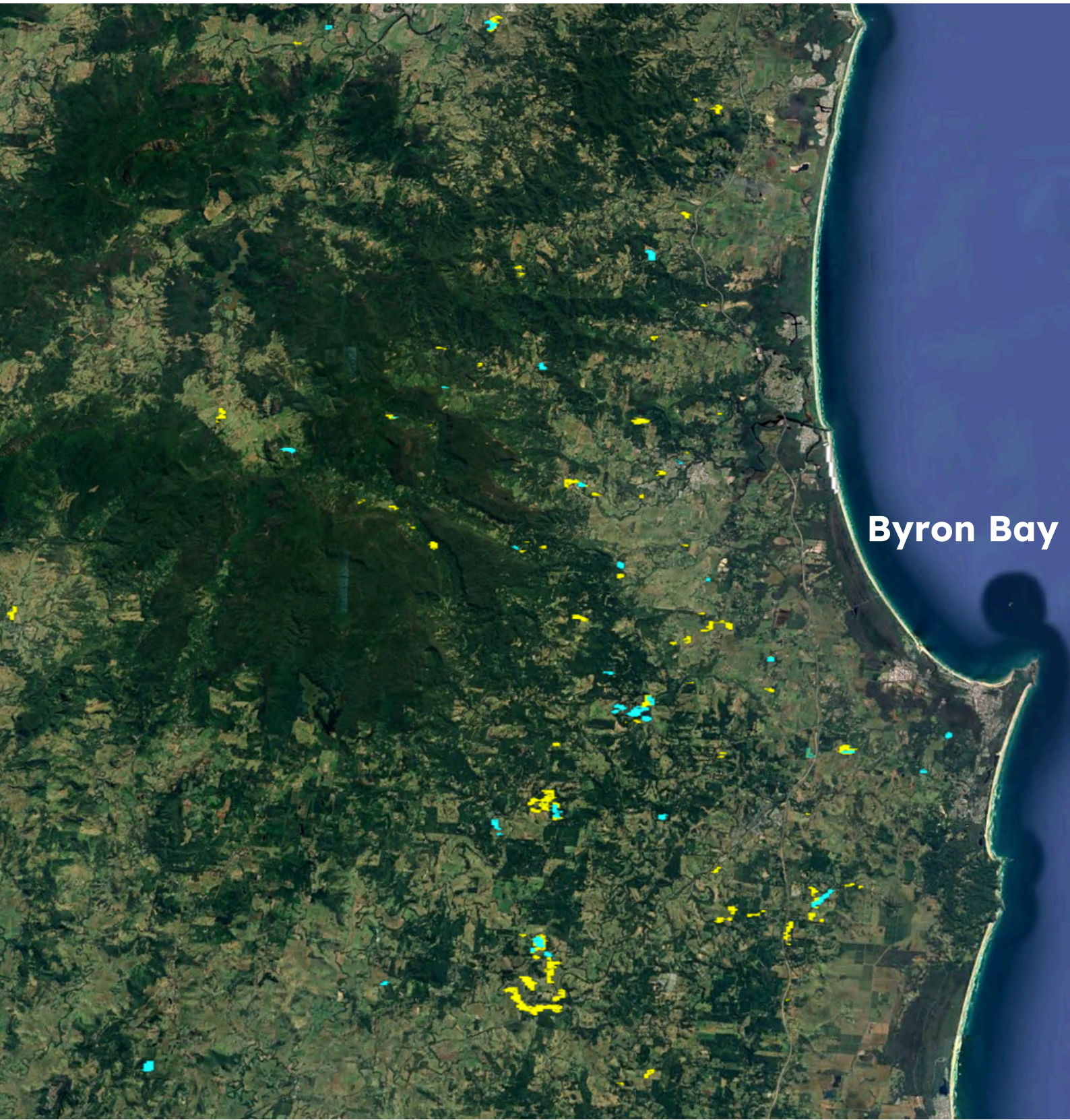
# IMPACT

The below mapping shows our primary area of works in NSW. The yellow zones show tree planting and the teal show rainforest regeneration sites.

While all this has been made possible in just 5 years, we anticipate that growing as fast as we are and being that there are several other large operators restoring the area, that it will become reasonably ecologically stable and reasonably well regenerated by 2035.

Our goal is not simply that plantings will become the rainforest of the future. Rather we work so that the trees we plant will seed out the region with billions of seeds.

The goal is a phenomenon called 'Ecological Resilience' and it means that the forest can self recover when healed enough. Ecological structure restitches itself back together.





## PART I

# Seed collection and nursery



*For the collection of a huge array of diverse seeds from the rainforest remnants we recruited the best person possible with SCJs support.*

*Michelle Chapman from Seed Tree Maps is the lead expert who wrote the regional book on seed collection for around 200 rainforest tree species in our area.*

*She, with her team and in coordination with RN's seed collectors has gathered an incredible 160+ species for the RN nursery. This result with your funding has taken us to a diversity that we have never had in-house before now.*

*This will enable future programs that were not possible before.*

*Your support also allowed us to restore our cache of water crystals. The dry crystals have water added and are used as a jelly that keeps trees from drying out and dying once planted. The growth rates we see using these and the survival is second to none. You have supplied us enough to last one more year!*

*Secondly, six times six cubic metres of soil were paid by SCJ which has allowed us to pot roughly 37, 500 rainforest trees since November.*

*As the picture shows, this has also allowed us to start growing advanced stage trees for specialised projects.*

*These have become a hit with landholders and a good fundraiser for the nursery!*





## PART II

# Nursery upgrades



*For 6 years now RN has struggled with native and invasive rodents alike eating our seeds!*

*This sounds somewhat trivial, yet for seed collectors who hike for days to find us the rarest species it has been somewhat soul crushing at times.*

*SCJ's donations allowed us to hire carpenters to build us fully sealable and breathable seed germination boxes to protect from rodents and other pests.*

*Two ten meter long rows of these boxes were custom fabricated with your donation. They have allowed us to grow species that we couldn't grow before as they were favourite foods for pests.*

*Our entire nursery operation has been built piece by piece with small donations going back to humble beginnings in 2018.*

*Thank you for supporting our nursery to reach another objective, it supports a team of excellent ecologists who know things about the ancient rainforests that few do..*



## PART III

### Improvements to equipment

We use Stihl augers to drill all our tree holes, so that the trees are being planted down at 400mm deep. They have amazing survival rates with these good starting conditions.

Unfortunately, this means our 14 earth drills are constantly getting a beating, drilling some 12 000 holes per week on average. They need constant welding, new carburettors and more. SCJ helped us replace and repair parts that were *out of order for over one year!*



*This year has been constant rain or extreme heat. One of the hardest for us working outside so far.*

*We bought three vehicle mounted shade sails to save our staff from exhaustion in the worst conditions. Out in Kyogle this year you saved us from the worst of it when over 60k trees were planted in extreme weather.*

*A huge thank you SCJ.*

Constant offroading five days per week requires mud tyres in our environment due to the soft rainforest soils and extreme terrain.

We need to replace these tyres every 16 months so we can keep getting to locations that need reforestation. These are often in valleys and gulleys of course! We replaced a set of offroad tyres with your help.





## PART V

# Contingency



*The Vitara was our first car in 2018 and part of planting over 700 000 trees before she had to retire in 2024.*

*We are so lucky SCJ came along when you did with this generous donation. We stated when asking for your support, that at times unexpected costs come along and they did this year..*

*Our original Suzuki Vitara - the first car donated to RN had to be taken off the road for safety reasons leaving us down a crew car.*

*With your donation we were able to replace our tugboat Vitara with a Jeep Wrangler which has been making the runs to take trailers of plants to plantings, pull out vehicles, deliver staff, and help on planting days!*

*The Wrangler TJ can cover for all the old uses of the Vitara.*





## PART V

### Contingency continued

*Our largest trailer was deemed unsafe for road use in April this year and was decommissioned in April 2024. Unfortunately that has made transporting trees in volume much harder due to it's massive capacity..*

*With your support we replaced it with a new galvanised trailer almost as large and just in time. We can't state enough that there are almost no donations to RN that are spare to save us from these equipment losses. The new trailer is better suited than steel for our huge rainfall conditions, as such we hope it lasts for decades.*





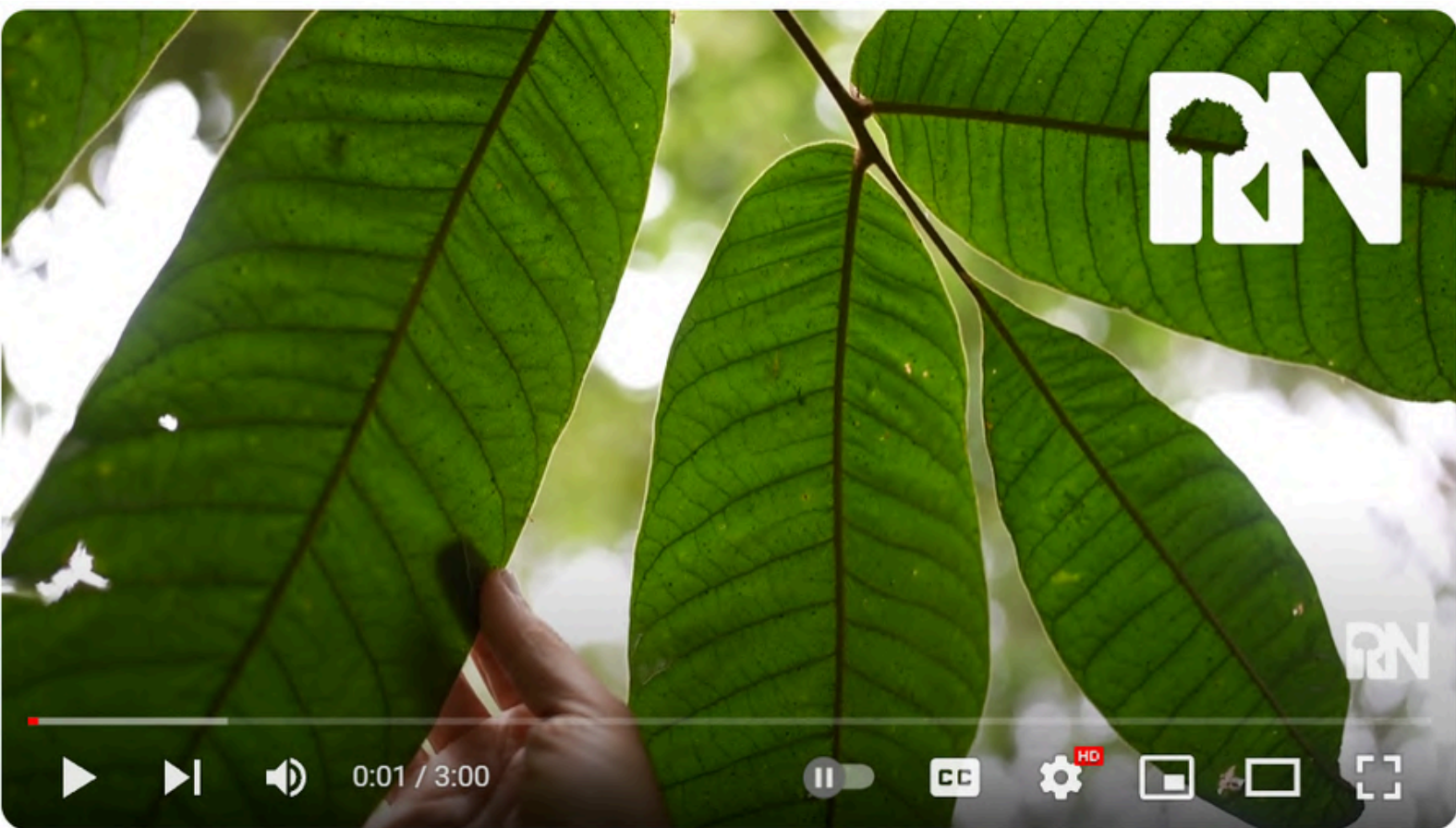
## PART IV

# Reporting and Project Administration

*As part of this funding round, we produced a three minute video for SCJ with Paul Daley at A Lush Forest Media. This was presented to SCJ in Sydney, and has a permanent presence on our website, socials and youtube.*

*It's hard to know the full limits of brand benefit with such things.. For example, a large international company recently contacted us wanting a similar video done and specifically said "like the SC Johnson video".*

*Ideally, we hope that these media pieces allow you to show many people your passion for the Australian environment and receive all the credit you deserve for engaging in remediation for the damage of the past.*



*Administering all of this;*

*The nursery purchases, nursery improvements, carpentry, machine and vehicle repairs and parts orders, ordering and assembling shade sails, video filming day trailer order and vehicle replacement were ALL covered for under \$2,000 in administration fees.*

*We hope SCJ can see we are taking your support as far as we can and that we appreciate you greatly.*



# BUDGET

## EXPENSES (from written agreement between RN X SCJ)

### Collection and growth of trees (including nursery perishables, pots, trays, soil, fertiliser and water)

	Expenditure	Receipt
Go grow soil deliveries (6metres cubic)	\$ 6,244.80	4x inc
Water crystal delivery (20x 20kg bags)	\$ 6,260.00	not inc
Seed collection (external contractor collecting for RN)	\$ 10,010.00	12x inc
Trees potted for SCJ (December 23 and January 24)	\$ 2,485.20	
	<b>TOTAL</b> \$	<b>25,000.00</b>
	<b>BUDEGETED</b> \$	<b>25,000.00</b>
	<b>SURPLUS</b> \$	<b>-</b>

### Nursery Upgrades

	Expenditure	Receipt
Grant Williams Carpentry	\$ 4,318.60	inc
	<b>TOTAL</b> \$	<b>4,318.60</b>
	<b>BUDEGETED</b> \$	<b>6,000.00</b>
	<b>SURPLUS</b> \$	<b>1,681.40</b>

### Improvements to equipment

	Expenditure	Receipt
BT 121 post hole driller full reco (was not functional). BT 131 x 2 frame repair and upgrade. Repair x 3 augers and sharpen tungsten alloy digger tips	\$ 803.45	3x inc
Vehicle shade sails X 3	\$ 837.00	2x inc
Mud tires for offroad planting truck	\$ 1,398.00	inc
	<b>TOTAL</b> \$	<b>3,038.45</b>
	<b>BUDGETED</b> \$	<b>4,000.00</b>
	<b>SURPLUS</b> \$	<b>961.55</b>

### Contingency (vehicle or equipment repair and organisational growth)

	Expenditure	Receipt
Field trailer replacement (Gal box trailer)	\$ 2,628.74	inc
Field Vehicle replacement (Jeep Wrangler)	\$ 9,800.00	inc
	<b>TOTAL</b> \$	<b>12,428.74</b>
	<b>BUDEGETED</b> \$	<b>10,000.00</b>
	<b>OVERSPEND</b> \$	<b>(2,428.74)</b>

### Reporting and Project Administration

	Expenditure	Receipt
3 minute film produced by A Lush Forest uploaded to socials and youtube	\$ 3,000.00	inc
Labour	\$ 1,854.21	not inc
	<b>TOTAL</b> \$	<b>4,854.21</b>
	<b>BUDEGETED</b> \$	<b>5,000.00</b>
	<b>SURPLUS</b> \$	<b>-</b>
	<b>WHOLE SCJ BUDGET</b> \$	<b>49,640.00</b>



# THANK YOU SC JOHNSON

We've taken your unconditional support seriously, acted in good faith and we hope the quality of undertakings demonstrates this.

We do not rely on government support to operate, so it is purely the will of business and people like you that allow us to do this work and to survive as a charity.

RN plants critically endangered subtropical lowland rainforest, and as such, together we are investing in the regrowth of ecosystems that will not be cleared while federal conservation laws are in place. This is not likely to change in the future.

Next we would love SC Johnson to send a team to visit, see our nursery, plant some trees and see some older sites - they are quite beautiful.

If you have any further queries please contact me on

0415 134 941

or

[info@reforestnow.org.au](mailto:info@reforestnow.org.au)

Yours sincerely,



Maximo Bottaro - Co-Founder & CEO of ReForest Now







**Thank you for your ongoing support**

