



ReForest Now
Growing Rainforest Together

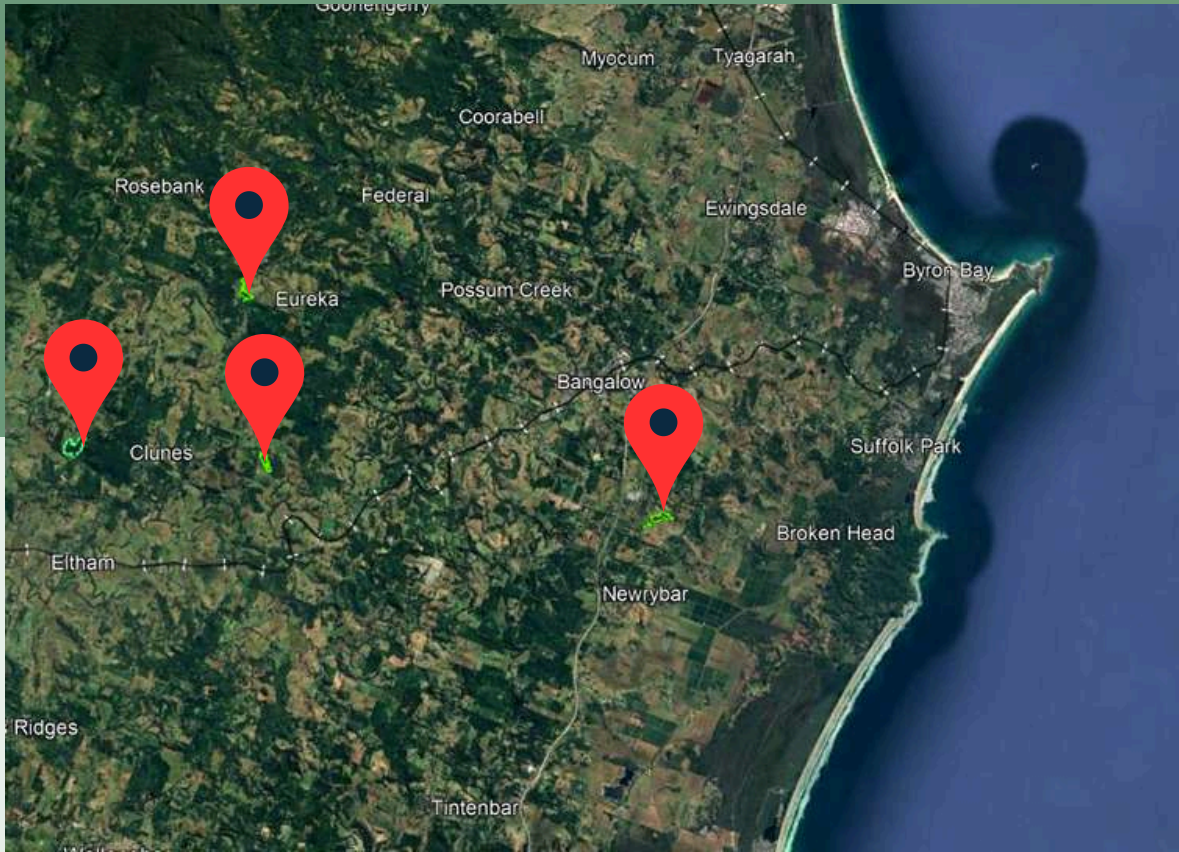
PROVISIONARY ENRICHMENT REPORT

- 2024 -

8, 015 trees planted to date
\$75, 000 donated



*Written by Leonie Zauzig
Edited by Maximo Bottaro*



ENRICHMENT PROGRAM

THE PROGRAM

The Enrichment Program was created to increase species diversity in existing plantings and degraded forests, with a particular emphasis on endangered and vulnerable species. The enriched areas already have developed canopies, reducing maintenance and site preparation costs for land holders, while offering an advantage for mature phase trees, which are challenging to plant in early stages of planting.

FAME

Your contribution allowed us to launch this project. Thank you for being the exclusive sponsor of this project, With your help, we were able to achieve:



302 NEW SPECIES



8,015 NEW TREES PLANTED



40.52 HA OF FOREST ENRICHED*

ReForest Now

Growing Rainforest Together

**approximate area of forest patches affected by all enrichment plantings combined (mapped in green outlines throughout this report)*



PLANTING SUMMARY

The first five enrichment plantings have been successfully completed. Below is an overview of the location, date, as well as the amount of trees and new species of each planting. More enrichment plantings are already planned and will be added to this report once completed.

We have achieved great results through these initial plantings and we are committed to learning from and improving this program. While we can report on tangible results, the positive impact this program has on the wider area, flora and fauna is immeasurable.

DATE	LOCATION	TREES	NEW SPECIES ADDED
July 18, 2024	113 Stewarts Rd, Clunes NSW	1,419	47
August 15, 2024 October 25, 2024	275 James Gibson Rd, Clunes NSW	1,438 1,022	80 83
September 5, 2024	82/112 Broken Head Rd, Newrybar NSW	2,400	52
October 3, 2024	356 Ridgewood Rd, Rosebank NSW	1,736	40

8,015*

ReForest Now

Growing Rainforest Together

**trees planted as of October 2024. The remaining 985 trees of this donation are in planning.*



BANYULA

The first enrichment planting on July 18, 2024 was a successful day with very high spirits and excitement amongst the team.

The area we enriched was embedded into a Camphor Laurel forest, with only 25 native species present prior to our planting. After treatment of the Camphor, we enriched the area with 49 species, two of which were present in small numbers at the site prior. Therefore, a total amount of **47 new species** were added to this forest.



25 before

72 after

188% increase in diversity

This represents a 188% increase in diversity for this forest, from 25 up to 72 species in our first attempt at enrichment. It is worth noting the 113 Stewarts Road, or 'Banyula' is our largest planting project to date, with species diversity of up to 195 across the property.

ReForest Now

Growing Rainforest Together

113 STEWARTS RD

Species of particular interest in this planting were the critically endangered **small-leaved Tamarind (*Diploglottis campbellii*)** and the vulnerable **Durobby (*Syzygium moorei*)**.



275 JAMES GIBSON RD



We planted **1,438 trees** during the first planting at this site on August 15 2024. A site that was heavily infested by both Broad-leaf (*Ligustrum lucidum*) and Small-leaf Privet (*Ligustrum sinense*). After the tedious, manual removal of the invasive species, we found many existing Hoop Pine (*Araucaria cunninghamii*) and rare and critically endangered species - **the Scrub Turpentine** (*Rhodamnia rubescens*) - naturally growing on this property.

The green outline symbolizes the forest that was enriched throughout two enrichment days. An area of **17.7 hectares**.

We added **80 new species** to the existing 22, bringing the new species total at this site to **102 species**.

This is an increase of 363% in species diversity. Being such a large area, we expect many of the species we plant to spread into the whole zone over the coming 5 to 10 years.



BIRDWING BUTTERFLY VINE

We also planted **Birdwing Butterfly Vines** (*Pararistolochia praevenosa*) here. These vines are essential for the survival of tRichmond Birdwing Butterfly as it is the sole source of food for the larvae.



22 before

102 after

363% increase in diversity

THREATENED SPECIES

We planted the following threatened species here:

Silver Quandong (*Eleacarpus kirtonii*), **Ball Nut** (*Floydia praelta*) and **Red Boppel Nut** (*Hicksbeachia pinnatifolia*).

275 JAMES GIBSON RD CONT.



The second planting day at this property was on October 25th. We planted **1,022** trees on this day. The map on the left shows the extended planting area.

Originally, only **22** native species were present in this forest. The second enrichment day added **86 species**, of which **83** were **new** to this section of the forest.

The species planted across the two enrichment days on this property overlapped to an extent, however, **57 species** were planted on the second day that were not included on the first day. The total number of species present at this site, including both planting days, is:

In this planting, we also included a total of **7 threatened** species.

THREATENED SPECIES

Davidson Plum (*Davidsonia jerseyana*),

Ball Nut (*Floydia praealta*),

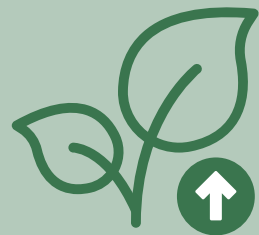
Lime Berry (*Micromelum minutum*),

Red Boppel Nut (*Hicksbeachia pinnatifolia*)

Senna (*Senna acclinis*),

Red Lilly Pilly (*Syzygium hodgkinsoniae*), and

Durobby (*Syzygium moorei*)



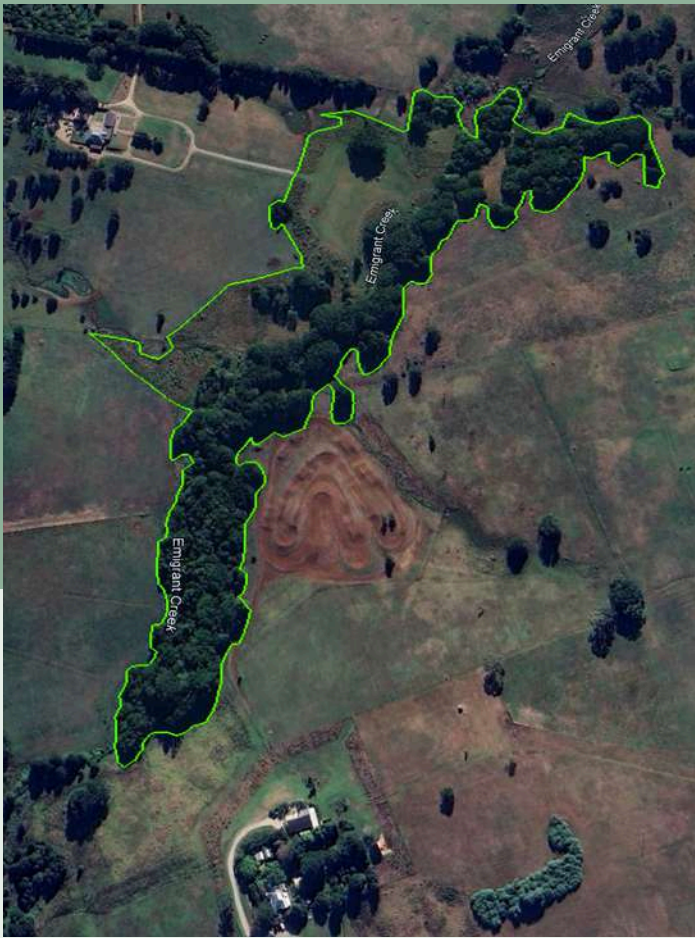
22 before

159 after

623% increase in diversity

Total species after is after both days of enrichment at this location.





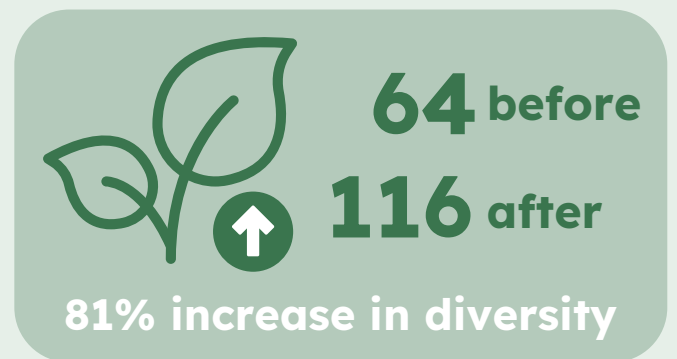
82/112 BROKEN HEAD RD

The green outline in the map above symbolizes the area that was enriched with this planting.

The area was planted on September 5th, 2024 and included **2,500 trees**. A total area of approximately **10.3 hectares** was enriched with these trees. This was across a planting zone and forested area stretching across Emigrant Creek.

Prior to the enrichment, **64** species were present on this property. We planted a total of **84** species at this location, with **52 new species** added to this existing forest. A total of **116** species are now found on this site.

On this day many young volunteers from the Long Island University joined us providing an excellent opportunity to teach students the importance of regenerating and enriching degraded forests, as well as planting with high biodiversity.



THREATENED SPECIES IN THIS PLANTING

Small-leaved Tamarind (*Diploglottis campbellii*),
Durobby (*Syzygium moorei*), and
Red Lilly Pilly (*Syzygium hodgkinsoniae*).

365 RIDGEWOOD RD

This enrichment planting connected two remnants of the 'Big Scrub', located in Rosebank, NSW. We planted a total of **1,736 trees** on October 3rd, 2024. The map below shows the fragmented remnants in the green outline. Heavy clearing of the Big Scrub resulted in less than 1% of it remaining in small, disconnected fragments today. Through the decrease of natural habitat, many species of fauna have been and are still affected by this.



51 before

91 after

78% increase in diversity

Our ecologists identified **51** native species across the remnant fragments. After regenerating the site, we planted **47** species, **40** of which were a new addition to this site. With that in mind, the total amount of species at this site is now **91 species**.

In this planting, we utilized the critically endangered **small-leaved Tamarind** (*Diploglottis campbellii*), as well as the vulnerable **Red Lilly Pilly** (*Syzygium hodgkinsoniae*) and **Durobby** (*Syzygium moorei*).

Red Lilly Pilly



ENDANGERED SPECIES PROFILES

Diploglottis campbellii

The **small-leaved Tamarind** is listed as endangered in NSW. In 2019 there were only 106 mature specimen known to exist in the wild.

ReForest Now managed to germinate over 200 specimen, some of which are now carefully planted in selected, well-suited areas.



Floydia praealta

The **Ball Nut** is listed as vulnerable under both the EPBC Act 1995 and the NSW BC Act 2016. Threats to this species include clearing and fragmentation.

It naturally occurs in the Booyung Nature Reserve, which is adjacent to 113 Stewarts Road (Banyula). Our plantings aim to reconnect these habitats.

Syzygium Moorei

The **Durobby**, also known as Coolamon, is eligible for listing as vulnerable under the EPBC Act 1995 and is listed in NSW under the BC Act 2016.

This rare rainforest tree can grow up to 20 meters tall and 10 meters wide. It's characteristic pink flowers are a key identifier of this species.



Hicksbeachia pinnatifolia

The **Bopple Nut**, or Red Bopple, is eligible for listing as vulnerable under the EPBC Act 1999 and is listed as vulnerable in NSW and QLD.

This small rainforest tree grows up to 12 meters tall and is particularly vulnerable to habitat invasion through Lantana camara and exotic vines.

EPBC Act 1995 = Environmental Protection and Biodiversity Conservation Act 1995. Australian Federal Legislation.

BC Act 2016= Biodiversity Conservation Act 2016. NSW legislation.

FAUNA OF THE BIG SCRUB

Stephens' Banded Snake

The Stephens' Banded Snake (*Hoplocephalus stephensii*) is listed as vulnerable in NSW, as their numbers are declining through clearing of their habitat.

Their natural habitat are rainforests and wet sclerophyll forests. As for many threatened species, their conservation depends on replanting their habitat.



Wompoo Fruit Dove

The Wompoo Fruit Dove (*Ptilinopus magnificus*) can be found along the East Coast of Australia and is declared vulnerable in NSW.

The clearing and fragmentation of native fruit trees - their food source - is resulting in a significant decrease of their numbers.

The spotted-tail Quoll

The spotted-tail Quoll (*Dasyurus maculatus*) is a small marsupial predator and plays an important role in population regulation of their prey.

Their declining numbers can be helped by replanting their natural habitat, enabling the little predator to regulate the native fauna.



Pink Underwing Moth

The Pink Underwing Moth (*Phyllodes imperialis smithersi*) is a threatened species due to habitat loss through fragmentation.

It feeds on rotting or overripe fruit that has not fallen to the ground and is therefore reliant on native fruit-trees.

GALLERY



FINAL WORDS

The focus of the Enrichment Program is to give degraded forests a chance to regrow into a healthy rainforests, providing important habitat to many threatened species of fauna and flora.

It has been challenging for our enrichment team to design and execute this novel technique of ecological restoration. Despite being a new, complex program, successful outcomes have been achieved at this early stage, much in line with our promises.

Thank you for seeing the value in this program and funding these first five plantings. We are committed to improving this program further. We have now collected data and feedback as a team as to how we can make the enrichment program even better in coming funding rounds.

We are grateful to see your continued support.

For updates or questions about the project, please email info@reforestnow.org.au.

Yours sincerely,



Maximo Bottaro - Co-Founder & President of ReForest Now



APPENDIX

SPECIES LIST

113 STEWARTS RD

We planted **49 species** at Banyula in Clunes. Threatened species are marked according to their status. **E**= Endangered; **V**= Vulnerable.

<i>Abrophyllum ornans</i>	Native Hydrangea
<i>Acronychia oblongifolia</i>	Common Acronychia
<i>Alocasia brisbanensis</i>	Cunjevoi Lily
<i>Alpinia caerulea</i>	Native Ginger
<i>Aphananthe philippinensis</i>	Rough-leaved Elm
<i>Archirhodomyrtus beckleri</i>	Rose Myrtle
<i>Archontophoenix cunninghamiana</i>	Bangalow Palm
<i>Argyrodendron actinophyllum</i>	Black Booyong
<i>Argyrodendron trifoliolatum</i>	White Booyong
<i>Atractocarpus chartaceus</i>	Narrow-leaved Gardenia
<i>Auranticarpa rhombifolia</i>	Hollywood
<i>Cordyline rubra</i>	Palm Lily
<i>Cryptocarya laevigata</i>	Glossy Laurel
<i>Cupaniopsis newmanii</i>	Long-leaved Tuckeroo
<i>Diploglottis australis</i>	Native Tamarind

SPECIES LIST


113 STEWARTS RD
CONT.



<i>Diploglottis campbellii</i>	E	Small-leaved Tamarind
<i>Dysoxylum fraserianum</i>		Rosewood
<i>Dysoxylum mollissimum</i>		Red Bean
<i>Dysoxylum rufum</i>		Hairy Rosewood
<i>Ehretia acuminata</i> var. <i>acuminata</i>		Koda
<i>Endiandra pubens</i>		Hairy Walnut
<i>Eupomatia laurina</i>		Bolwarra
<i>Ficus macrophylla</i>		Moreton Bay Fig
<i>Ficus obliqua</i>		Small-leaved Fig
<i>Ficus virens</i>		White Fig
<i>Ficus watkinsiana</i>		Strangler Fig
<i>Flindersia australis</i>		Teak
<i>Hicksbeachia pinnatifolia</i>	V	Red Bopple Nut
<i>Litsea australis</i>		Brown Bolly Gum

SPECIES LIST

113 STEWARTS RD
CONT.



<i>Neolitsea dealbata</i>	Hairy-leaved Bolly Gum
<i>Pararchidendron pruinatum</i>	Snow wood
<i>Pennantia cunninghamii</i>	Brown Beech
<i>Ptilidostigma glabrum</i>	Plum Myrtle
<i>Pittosporum multiflorum</i>	Orange Thorn
<i>Planchonella australis</i>	Black Apple
<i>Podocarpus elatus</i>	Plum Pine
<i>Rhodosphaera rhodanthema</i>	Deep Yellowwood
<i>Sloanea australis</i>	Maiden's Blush
<i>Streblus brunonianus</i>	Whalebone Tree
<i>Synoum glandulosum</i>	Scentless Rosewood
<i>Syzygium crebrinerve</i>	Purple Cherry
<i>Syzygium francisii</i>	Giant Water Gum
<i>Syzygium hodgkinsoniae</i>	V Red Lilly Pilly
<i>Syzygium ingens</i>	Red Apple
<i>Syzygium luehmannii</i>	Riberry
<i>Syzygium moorei</i>	V Durobby
<i>Syzygium oleosum</i>	Blue Lilly Pilly
<i>Tabernaemontana pandacaqui</i>	Banana Bush
<i>Wilkiea huegeliana</i>	Veiny Wilkiea

SPECIES LIST

275 JAMES GIBSON RD
AUGUST 15, 2024

We enriched this degraded forest with **84 species**. Threatened species are marked according to their status. **E**= Endangered; **V**= Vulnerable.

<i>Abrophyllum ornans</i>	Native Hydrangea
<i>Acronychia oblongifolia</i>	Common Acronychia
<i>Acronychia pubescens</i>	Hairy Acronychia
<i>Araucaria cunninghamii</i>	Hoop Pine
<i>Archidendron hendersonii</i>	White Laceflower
<i>Archirhodomertus beckleri</i>	Rose Myrtle
<i>Argyrodendron trifoliolatum</i>	White Booyong
<i>Arytera distylis</i>	Twin-leaved Coogera
<i>Atractocarpus chartaceus</i>	Narrow-leaved Gardenia
<i>Auranticarpa rhombifolia</i>	Hollywood
<i>Austrocallerya megasperma</i>	Native Wisteria
<i>Brachychiton discolor</i>	Lacebark Tree
<i>Castanospermum australe</i>	Black Bean
<i>Cinnamomum oliveri</i>	Oliver's Sassafras
<i>Cordyline petiolaris</i>	Broad-leaved Palm Lily
<i>Cordyline rubra</i>	Palm Lily
<i>Cordyline stricta</i>	Narrow-leaved Palm Lily
<i>Crinum pedunculatum</i>	Beach Lily
<i>Cryptocarya laevigata</i>	Glossy Laurel
<i>Cryptocarya triplinervis</i>	Three Veined Laurel

SPECIES LIST

275 JAMES GIBSON RD
AUGUST 15, 2024 CONT.

<i>Cupaniopsis newmanii</i>		Long-leaved Tuckeroo
<i>Cupaniopsis parvifolia</i>		Small-leaved Tuckeroo
<i>Dianella caerulea</i>		Blue Flax Lily
<i>Diospyros pentamera</i>		Myrtle Ebony
<i>Diploglottis australis</i>		Native Tamarind
<i>Diploglottis campbellii</i>	E	Small-leaved Tamarind
<i>Dysoxylum fraserianum</i>		Rosewood
<i>Dysoxylum mollissimum</i>		Red Bean
<i>Elaeocarpus eumundi</i>		Eumundi Quandong
<i>Elaeocarpus grandis</i>		Blue Quandong
<i>Elaeocarpus kirtonii</i>	E	Silver Quandong
<i>Elaeodendron australe var. australe</i>		Red Olive Plum
<i>Endiandra pubens</i>		Hairy Walnut
<i>Eupomatia laurina</i>		Bolwarra
<i>Ficus coronata</i>		Creek Sandpaper Fig
<i>Ficus fraseri</i>		Sandpaper Fig
<i>Ficus macrophylla</i>		Moreton Bay Fig
<i>Ficus virens</i>		White Fig
<i>Ficus watkinsiana</i>		Strangler Fig
<i>Flindersia australis</i>		Teak
<i>Flindersia bennettiana</i>		Bennetts Ash

SPECIES LIST

275 JAMES GIBSON RD
AUGUST 15, 2024 CONT.

<i>Flindersia schottiana</i>		Cudgerie
<i>Flindersia xanthoxyla</i>		Yellowwood
<i>Floydia praealta</i>	V	Ball Nut
<i>Glochidion sumatranum</i>		Umbrella Cheese Tree
<i>Harpullia pendula</i>		Tulipwood
<i>Hicksbeachia pinnatifolia</i>	V	Red Bopple Nut
<i>Homalanthus populifolius</i>		Bleeding Heart
<i>Karrabina benthamiana</i>		Red Carabeen
<i>Linospadix monostachyos</i>		Walking Stick Palm
<i>Melia azedarach var. australasica</i>		White Cedar
<i>Myrsine richmondensis</i>		Rippled-leaf Muttonwood
<i>Neolitsea dealbata</i>		Hairy-leaved Bolly Gum
<i>Notelaea venosa</i>		Mountain Mock-olive
<i>Pararchidendron pruinosum</i>		Snow Wood
<i>Pararistolochia praevenosa</i>		Birdwing Butterfly Vine
<i>Pennantia cunninghamii</i>		Brown Beech
<i>Pilidiostigma glabrum</i>		Plum Myrtle
<i>Pittosporum revolutum</i>		Hairy Pittosporum
<i>Planchonella australis</i>		Black Apple
<i>Podocarpus elatus</i>		Plum Pine
<i>Polyosma cunninghamii</i>		Featherwood

SPECIES LIST

275 JAMES GIBSON RD
AUGUST 15, 2024 CONT.

<i>Polyscias elegans</i>		Celerywood
<i>Polyscias murrayi</i>		Pencil Cedar
<i>Psychotria loniceroides</i>		Hairy Psychotria
<i>Quassia Mt Nardi</i>	V	Southern Quassia
<i>Rhodospaera rhodanthema</i>		Deep Yellowwood
<i>Sarcopteryx stipata</i>		Steelwood
<i>Sloanea australis</i>		Maiden's Blush
<i>Stenocarpus sinuatus</i>		Firewheel Tree
<i>Streblus brunonianus</i>		Whalebone Tree
<i>Synoum glandulosum</i>		Scentless Rosewood
<i>Syzygium crebrinerve</i>		Purple Cherry
<i>Syzygium francisii</i>		Giant Water Gum
<i>Syzygium hodgkinsoniae</i>	V	Red Lilly Pilly
<i>Syzygium ingens</i>		Red Apple
<i>Syzygium luehmannii</i>		Riberry
<i>Syzygium moorei</i>	V	Durobby
<i>Syzygium oleosum</i>		Blue Lilly Pilly
<i>Tabernaemontana pandacaqui</i>		Banana Bush
<i>Toechima dasyrrhache</i>		Blunt-leaved Steelwood
<i>Toona ciliata</i>		Red Cedar
<i>Wilkiea huegeliana</i>		Veiny Wilkiea
<i>Wilkiea macrophylla</i>		Large-leaved Wilkiea

SPECIES LIST

275 JAMES GIBSON RD
OCTOBER 25, 2024

We enriched this degraded forest with **86 species**. Threatened species are marked according to their status. **PE**= Presumed Extinct; **E**= Endangered; **V**= Vulnerable.

<i>Acronychia oblongifolia</i>		Common Acronychia
<i>Acronychia pubescens</i>		Hairy Acronychia
<i>Alpinia caerulea</i>		Native Ginger
<i>Araucaria cunninghamii</i>		Hoop Pine
<i>Archidendron hendersonii</i>		White Laceflower
<i>Archirhodomertus beckleri</i>		Rose Myrtle
<i>Archontophoenix cunninghamiana</i>		Bangalow Palm
<i>Argyrodendron trifoliolatum</i>		White Booyong
<i>Arytera distylis</i>		Twin-leaved Coogera
<i>Atractocarpus chartaceus</i>		Narrow-leaved Gardenia
<i>Baloghia inophylla</i>		Brush Bloodwood
<i>Brachychiton acerifolius</i>		Flame Tree
<i>Castanospermum australe</i>		Black Bean
<i>Cinnamomum oliveri</i>		Oliver's Sassafras
<i>Cordyline petiolaris</i>		Broad-leaved Palm Lily
<i>Crinum pedunculatum</i>		Beach Lily
<i>Cryptocarya obovata</i>		Pepperberry
<i>Cupaniopsis newmanii</i>		Long-leaved Tuckeroo
<i>Cupaniopsis parvifolia</i>		Small-leaved Tuckeroo
<i>Davidsonia jerseyana</i>	E	Davidson's Plum
<i>Diploglottis australis</i>		Native Tamarind

SPECIES LIST

275 JAMES GIBSON RD
OCTOBER 25, 2024 CONT.

<i>Dysoxylum fraserianum</i>		Rosewood
<i>Dysoxylum mollissimum</i>		Red Bean
<i>Dysoxylum rufum</i>		Hairy Rosewood
<i>Ehretia acuminata</i> var. <i>acuminata</i>		Koda
<i>Elaeocarpus grandis</i>		Blue Quandong
<i>Elaeodendron australe</i> var. <i>australe</i>		Red Olive Plum
<i>Endiandra globosa</i>		Black Walnut
<i>Endiandra pubens</i>		Hairy Walnut
<i>Eupomatia bennettii</i>		Small Bolwarra
<i>Euroschinus falcatus</i>		Ribbonwood
<i>Ficus coronata</i>		Creek Sandpaper Fig
<i>Ficus fraseri</i>		Sandpaper Fig
<i>Ficus henneana</i>		Deciduous Fig
<i>Ficus macrophylla</i>		Moreton Bay Fig
<i>Ficus virens</i>		White Fig
<i>Ficus watkinsiana</i>		Strangler Fig
<i>Flindersia bennettiana</i>		Bennetts Ash
<i>Flindersia schottiana</i>		Cudgerie
<i>Flindersia xanthoxyla</i>		Yellowwood
<i>Floydia praealta</i>	V	Ball Nut
<i>Gmelina leichhardtii</i>		White Beech
<i>Harpullia pendula</i>		Tulipwood

SPECIES LIST

275 JAMES GIBSON RD
OCTOBER 25, 2024 CONT.

<i>Hicksbeachia pinnatifolia</i>	V	Red Bopple Nut
<i>Karrabina benthamiana</i>		Red Carabeen
<i>Linospadix monostachyos</i>		Walking Stick Palm
<i>Litsea australis</i>		Brown Bolly Gum
<i>Lomandra longifolia</i>		Spiny head Mat-rush
<i>Lophostemon confertus</i>		Brush Box
<i>Melia azedarach var. australasica</i>		White Cedar
<i>Micromelum minutum</i>	PE	Lime Berry
<i>Mischocarpus pyriformis</i>		Yellow Pear-fruit
<i>Myrsine howittiana</i>		Brush Muttonwood
<i>Myrsine variabilis</i>		Muttonwood
<i>Neisosperma poweri</i>		Milkbush
<i>Neolitsea australiensis</i>		Green Bolly Gum
<i>Neolitsea dealbata</i>		Hairy-leaved Bolly Gum
<i>Pararchidendron pruinatum</i>		Snow Wood
<i>Pilidiostigma glabrum</i>		Plum Myrtle
<i>Pittosporum multiflorum</i>		Orange Thorn
<i>Pittosporum revolutum</i>		Hairy Pittosporum
<i>Planchonella australis</i>		Black Apple
<i>Podocarpus elatus</i>		Plum Pine
<i>Polyosma cunninghamii</i>		Featherwood
<i>Psychotria daphnoides</i>		Smooth Psychotria

SPECIES LIST

275 JAMES GIBSON RD
OCTOBER 25, 2024 CONT.

<i>Psychotria loniceroides</i>		Hairy Psychotria
<i>Rhodosphaera rhodanthema</i>		Deep Yellowwood
<i>Senna acclinis</i>	E	Senna
<i>Sloanea woollsii</i>		Yellow Carabeen
<i>Stenocarpus sinuatus</i>		Firewheel Tree
<i>Synoum glandulosum</i>		Scentless Rosewood
<i>Syzygium crebrinerve</i>		Purple Cherry
<i>Syzygium floribundum</i>		Weeping Lilly Pilly
<i>Syzygium francisii</i>		Giant Water Gum
<i>Syzygium hemilamprum</i>		Broad-leaved Lilly Pilly
<i>Syzygium hodgkinsoniae</i>	V	Red Lilly Pilly
<i>Syzygium ingens</i>		Red Apple
<i>Syzygium luehmannii</i>		Riberry
<i>Syzygium moorei</i>	V	Durobby
<i>Syzygium oleosum</i>		Blue Lilly Pilly
<i>Syzygium smithii</i>		Common Lilly Pilly
<i>Syzygium smithii rheophytic race</i>		Creek Lilly Pilly
<i>Tabernaemontana pandacaqui</i>		Banana Bush
<i>Toona ciliata</i>		Red Cedar
<i>Wilkiea huegeliana</i>		Veiny Wilkiea
<i>Wilkiea macrophylla</i>		Large-leaved Wilkiea

SPECIES LIST

82/112 BROKEN HEAD RD

We planted **84 species** in Newrybar. Threatened species are marked according to their status. **E**= Endangered; **V**= Vulnerable.

<i>Abrophyllum ornans</i>	Native Hydrangea
<i>Acacia disparrima ssp. disparrima</i>	Brush Ironbark Wattle
<i>Acacia maidenii</i>	Maiden's Wattle
<i>Acronychia pubescens</i>	Hairy Acronychia
<i>Allocasuarina torulosa</i>	Forest Oak
<i>Alphitonia excelsa</i>	Red Ash
<i>Alpinia caerulea</i>	Native Ginger
<i>Aphananthe philippinensis</i>	Rough-leaved Elm
<i>Araucaria cunninghamii</i>	Hoop Pine
<i>Archontophoenix cunninghamiana</i>	Bangalow Palm
<i>Argyrodendron trifoliolatum</i>	White Booyong
<i>Auranticarpa rhombifolia</i>	Hollywood
<i>Austromyrtus dulcis</i>	Midgen Berry
<i>Brachychiton acerifolius</i>	Flame Tree
<i>Brachychiton birdwillii</i>	Dwarf Kurrajong
<i>Brachychiton discolor</i>	Lacebark Tree
<i>Callicoma serratifolia</i>	Black Wattle
<i>Cinnamomum oliveri</i>	Oliver's Sassafras
<i>Commersonia bartramia</i>	Brown Kurrajong
<i>Cryptocarya laevigata</i>	Glossy Laurel

SPECIES LIST

82/112 BROKEN HEAD RD
CONT

<i>Cryptocarya rigida</i>		Forest Maple
<i>Cryptocarya triplinervis</i>		Three Veined Laurel
<i>Cupaniopsis newmanii</i>		Long-leaved Tuckeroo
<i>Cupaniopsis parvifolia</i>		Small-leaved Tuckeroo
<i>Diploglottis australis</i>		Native Tamarind
<i>Diploglottis campbellii</i>	E	Small-leaved Tamarind
<i>Drymophila moorei</i>		Orange Berry
<i>Dysoxylum fraserianum</i>		Rosewood
<i>Dysoxylum mollissimum</i>		Red Bean
<i>Dysoxylum rufum</i>		Hairy Rosewood
<i>Ehretia acuminata var. acuminata</i>		Koda
<i>Elaeocarpus grandis</i>		Blue Quandong
<i>Eupomatia laurina</i>		Bolwarra
<i>Flindersia bennettiana</i>		Bennetts Ash
<i>Flindersia schottiana</i>		Cudgerie
<i>Flindersia xanthoxyla</i>		Yellowwood
<i>Glochidion ferdinandi</i>		Cheese Tree
<i>Glochidion sumatranum</i>		Umbrella Cheese Tree
<i>Grevillea robusta</i>		Silky Oak
<i>Guioa semiglauca</i>		Guioa
<i>Harpullia pendula</i>		Tulipwood
<i>Hicksbeachia pinnatifolia</i>		Red Bopple Nut

V

SPECIES LIST

82/112 BROKEN HEAD RD
CONT

<i>Homalanthus populifolius</i>	Bleeding Heart
<i>Hovea acutifolia</i>	Purple Pea
<i>Hymenosporum flavum</i>	Native Frangipani
<i>Lepiderema pulchella</i>	Fine-leaved Tuckeroo
<i>Litsea australis</i>	Brown Bolly Gum
<i>Litsea reticulata</i>	Bolly Gum
<i>Lomandra hystrix</i>	Forest Mat-rush
<i>Lophostemon confertus</i>	Brush Box
<i>Macaranga tanarius</i>	Macaranga
<i>Mallotus discolor</i>	Yellow Kamala
<i>Melaleuca quinquenervia</i>	Broad-leaved Paperbark
<i>Melastoma malabathricum</i>	Blue Tongue
<i>Melia azedarach var. australasica</i>	White Cedar
<i>Melicope elleryana</i>	Pink Euodia
<i>Mischocarpus pyriformis</i>	Yellow Pear-fruit
<i>Myrsine howittiana</i>	Brush Muttonwood
<i>Myrsine variabilis</i>	Muttonwood
<i>Pennantia cunninghamii</i>	Brown Beech
<i>Petalostigma triloculare</i>	Long-leaved Bitter Bark
<i>Pipturus argenteus</i>	Native Mulberry
<i>Pittosporum revolutum</i>	Hairy Pittosporum
<i>Pittosporum undulatum</i>	Sweet Pittosporum

ReForest Now

Growing Rainforest Together

SPECIES LIST

82/112 BROKEN HEAD RD
CONT

<i>Planchonella australis</i>		Black Apple
<i>Polyscias murrayi</i>		Pencil Cedar
<i>Rhodosphaera rhodanthema</i>		Deep Yellowwood
<i>Senna acclinis</i>	E	Brush Senna
<i>Sloanea australis</i>		Maiden's Blush
<i>Sloanea woollsii</i>		Yellow Carabeen
<i>Solanum aviculare</i>		Kangaroo Apple
<i>Stenocarpus sinuatus</i>		Firewheel Tree
<i>Sterculia quadrifida</i>		Peanut Tree
<i>Streblus brunonianus</i>		Whalebone Tree
<i>Synoum glandulosum</i>		Scentless Rosewood
<i>Syzygium crebrinerve</i>		Purple Cherry
<i>Syzygium floribundum</i>		Weeping Lilly Pilly
<i>Syzygium hodgkinsoniae</i>	V	Red Lilly Pilly
<i>Syzygium ingens</i>		Red Apple
<i>Syzygium luehmannii</i>		Riberry
<i>Syzygium oleosum</i>		Blue Lilly Pilly
<i>Syzygium smithii</i>		Common Lilly Pilly
<i>Toechima dasyrrhache</i>		Blunt-leaved Steelwood
<i>Toona ciliata</i>		Red Cedar

SPECIES LIST

364 RIDGEWOOD RD

We planted **47 species** in Rosebank. Threatened species are marked according to their status. **E**= Endangered; **V**= Vulnerable.

<i>Abrophyllum ornans</i>		Native Hydrangea
<i>Archidendron hendersonii</i>		White Laceflower
<i>Argyrodendron actinophyllum</i>		Black Booyong
<i>Brachychiton acerifolius</i>		Flame Tree
<i>Castanopora alphandii</i>		Brown Tamarind
<i>Cinnamomum oliveri</i>		Oliver's Sassafras
<i>Cryptocarya rigida</i>		Forest Maple
<i>Cupaniopsis newmanii</i>		Long-leaved Tuckeroo
<i>Diploglottis australis</i>		Native Tamarind
<i>Diploglottis campbellii</i>	E	Small-leaved Tamarind
<i>Duboisia myoporoides</i>		Corkwood
<i>Dysoxylum fraserianum</i>		Rosewood
<i>Dysoxylum mollissimum</i>		Red Bean
<i>Ehretia acuminata</i> var. <i>acuminata</i>		Koda
<i>Elaeocarpus grandis</i>		Blue Quandong

SPECIES LIST

364 RIDGEWOOD RD
CONT.

<i>Eupomatia laurina</i>	Bolwarra
<i>Ficus fraseri</i>	Sandpaper Fig
<i>Ficus obliqua</i>	Small-leaved Fig
<i>Flindersia australis</i>	Teak
<i>Flindersia bennettiana</i>	Bennetts Ash
<i>Flindersia schottiana</i>	Cudgerie
<i>Flindersia xanthoxyla</i>	Yellowwood
<i>Harpullia pendula</i>	Tulipwood
<i>Lomandra hystrix</i>	Forest Mat-rush
<i>Lophostemon confertus</i>	Brush Box
<i>Mallotus discolor</i>	Yellow Kamala
<i>Melia azedarach var. australasica</i>	White Cedar
<i>Mischocarpus pyriformis</i>	Yellow Pear-fruit
<i>Myrsine howittiana</i>	Brush Muttonwood
<i>Pararchidendron pruinosum</i>	Snow Wood
<i>Pennantia cunninghamii</i>	Brown Beech

SPECIES LIST

364 RIDGEWOOD RD
CONT.

<i>Pittosporum revolutum</i>		Hairy Pittosporum
<i>Pittosporum undulatum</i>		Sweet Pittosporum
<i>Planchonella australis</i>		Black Apple
<i>Polyscias murrayi</i>		Pencil Cedar
<i>Psychotria loniceroides</i>		Hairy Psychotria
<i>Rhodosphaera rhodanthema</i>		Deep Yellowwood
<i>Sloanea australis</i>		Maiden's Blush
<i>Synoum glandulosum</i>		Scentless Rosewood
<i>Syzygium hemilamprum</i>		Broad-leaved Lilly Pilly
<i>Syzygium hodgkinsoniae</i>	V	Red Lilly Pilly
<i>Syzygium ingens</i>		Red Apple
<i>Syzygium luehmannii</i>		Riberry
<i>Syzygium moorei</i>	V	Durobby
<i>Syzygium oleosum</i>		Blue Lilly Pilly
<i>Syzygium smithii</i>		Common Lilly Pilly
<i>Toona ciliata</i>		Red Cedar



**THANK
YOU!**



Together, we can bring back the rainforest!



OUTCOME SUMMARY